

148TH & DIVISION

FOR LEASE
PORTLAND, OR



◀ **THREE DRIVE-UP LANES** ▶

LOCATION

14701 SE Division Street
Portland, OR 9723

AVAILABLE SPACE

3,900 SF

ASKING RATE

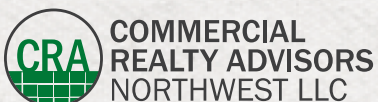
Please call for details

TRAFFIC COUNTS

SE Division Street SE – 31,941 ADT ('22)
148th Street – 10,616 ADT ('22)

HIGHLIGHTS

- Located directly north of the Division Street Fred Meyer store with average monthly visits of 74,599 in the last 12 months (Alpha Maps).
- Includes three drive-up lanes.
- High traffic counts on Division Street near signalized intersection at 148th Street.
- Available now!

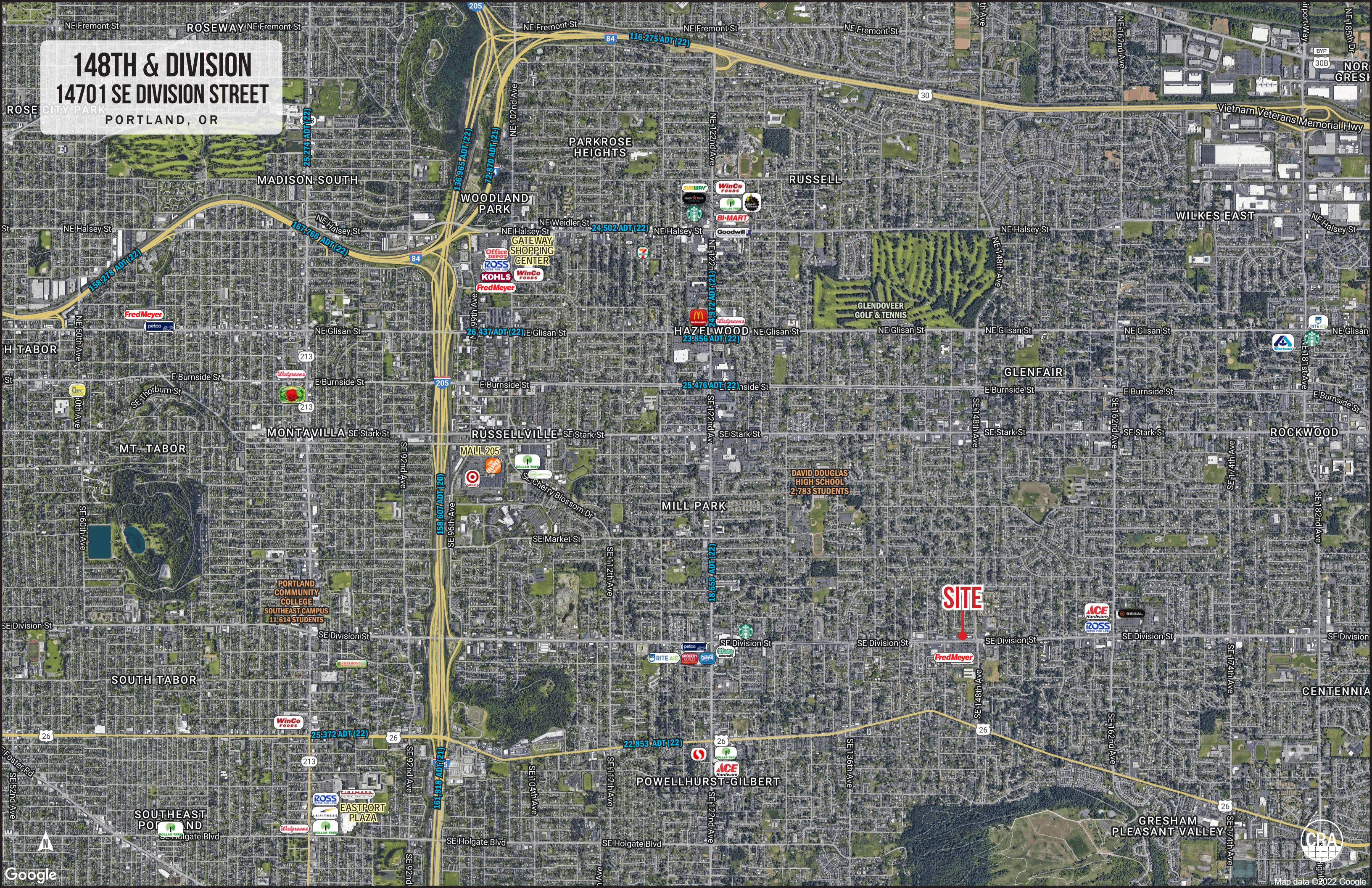


COMMERCIAL
REALTY ADVISORS
NORTHWEST LLC

Alex MacLean 503.709.3563 | alex@cra-nw.com
Alex MacLean IV 503.866.6425 | alex4@cra-nw.com

503.274.0211
www.cra-nw.com

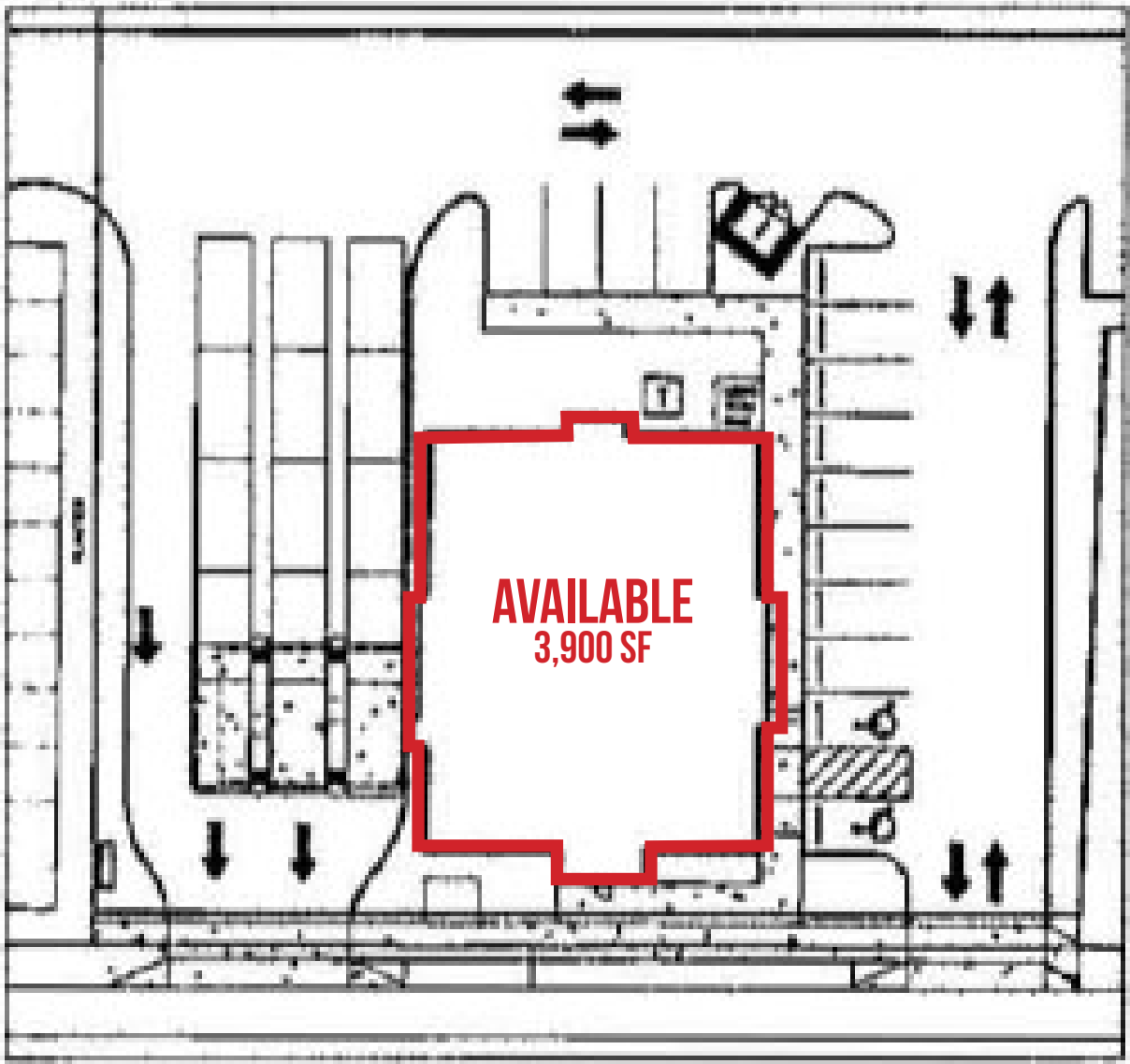
148TH & DIVISION
14701 SE DIVISION STREET
PORTLAND, OR



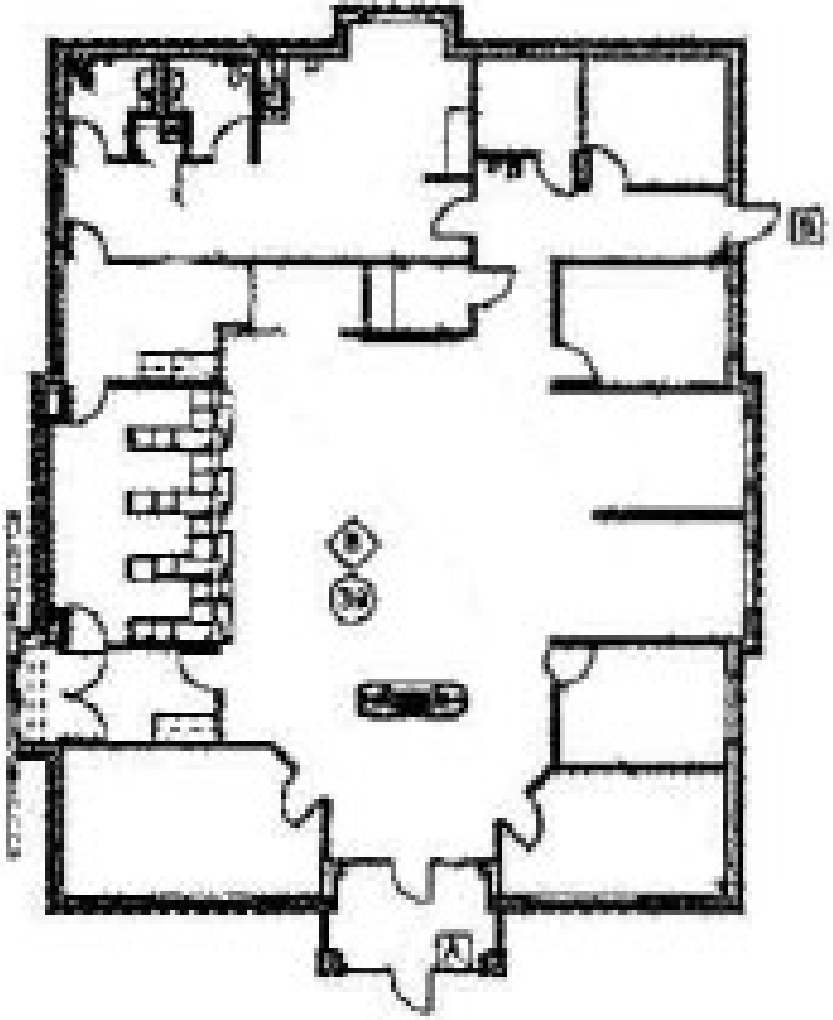
SITE



SITE PLAN



FLOOR PLAN



148TH & DIVISION

14701 SE DIVISION STREET

PORTLAND, OR

DEMOGRAPHIC SUMMARY

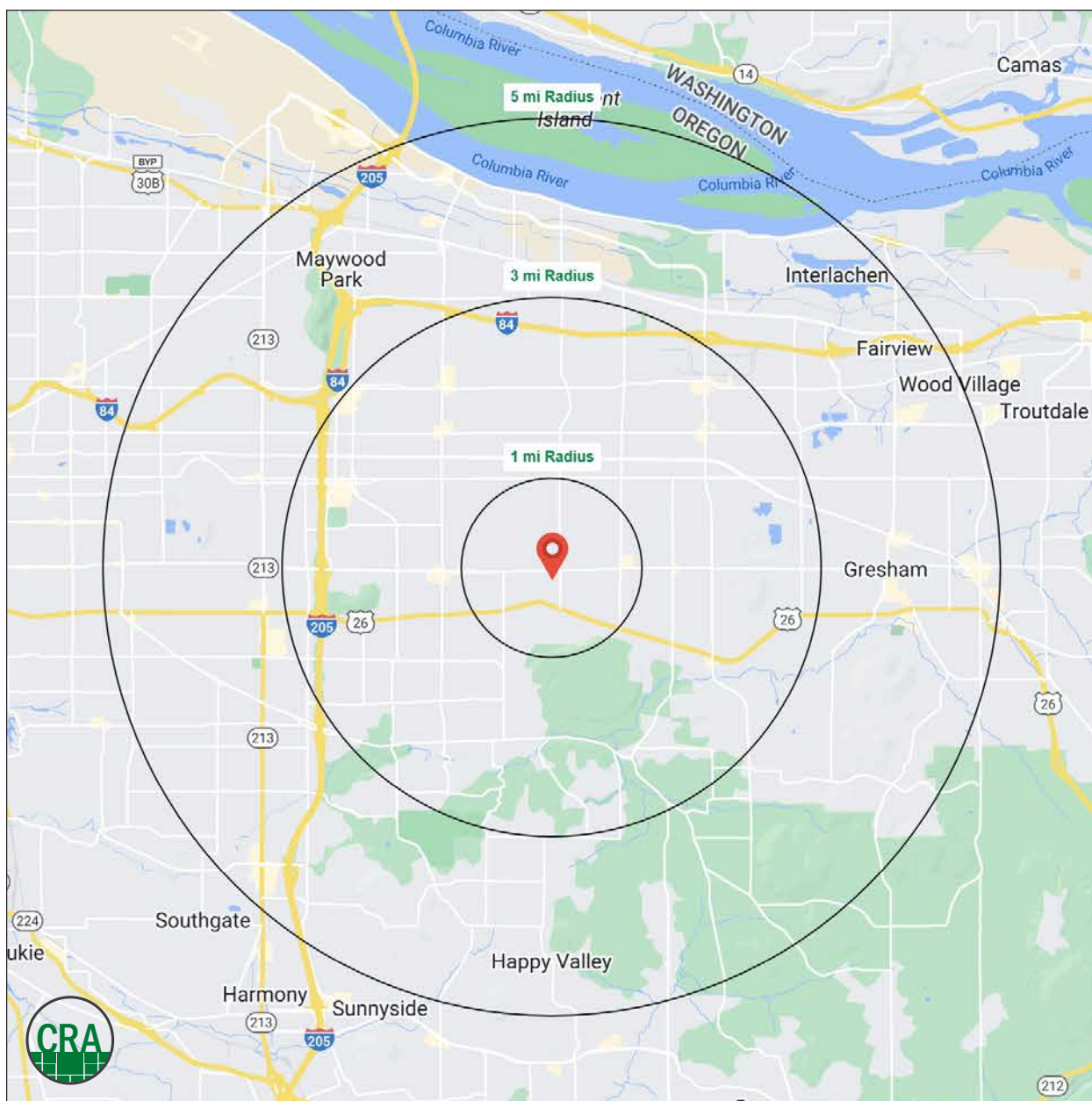
Source: Regis - SitesUSA (2023)	1 MILE	3 MILE	5 MILE
Estimated Population 2023	23,543	168,124	359,407
Estimated Households	7,901	59,436	135,096
Average HH Income	\$93,482	\$98,075	\$114,870
Median Home Value	\$390,920	\$405,296	\$441,144
Daytime Demographics 16+	10,375	96,824	221,493

168,124

Estimated 2023 Population
3 MILE RADIUS

\$98,075

Average Household Income
3 MILE RADIUS



Summary Profile

2010-2020 Census, 2023 Estimates with 2028 Projections
 Calculated using Weighted Block Centroid from Block Groups



Lat/Lon: 45.5045/-122.5121

14701 SE Division St Portland, OR 97233	1 mi radius	3 mi radius	5 mi radius
Population			
2023 Estimated Population	23,543	168,124	359,407
2028 Projected Population	21,499	156,932	339,295
2020 Census Population	24,119	171,172	367,720
2010 Census Population	23,163	161,099	340,806
Projected Annual Growth 2023 to 2028	-1.7%	-1.3%	-1.1%
Historical Annual Growth 2010 to 2023	0.1%	0.3%	0.4%
2023 Median Age	36.8	38.1	38.5
Households			
2023 Estimated Households	7,901	59,436	135,096
2028 Projected Households	7,475	57,552	131,701
2020 Census Households	8,256	60,651	136,858
2010 Census Households	7,923	57,604	127,980
Projected Annual Growth 2023 to 2028	-1.1%	-0.6%	-0.5%
Historical Annual Growth 2010 to 2023	-	0.2%	0.4%
Race and Ethnicity			
2023 Estimated White	57.6%	58.9%	63.5%
2023 Estimated Black or African American	7.8%	7.7%	6.3%
2023 Estimated Asian or Pacific Islander	15.0%	13.5%	12.5%
2023 Estimated American Indian or Native Alaskan	1.3%	1.3%	1.1%
2023 Estimated Other Races	18.3%	18.7%	16.5%
2023 Estimated Hispanic	19.4%	20.2%	17.2%
Income			
2023 Estimated Average Household Income	\$93,482	\$98,075	\$114,870
2023 Estimated Median Household Income	\$68,941	\$75,076	\$85,306
2023 Estimated Per Capita Income	\$31,574	\$35,016	\$43,479
Education (Age 25+)			
2023 Estimated Elementary (Grade Level 0 to 8)	7.5%	7.1%	5.4%
2023 Estimated Some High School (Grade Level 9 to 11)	6.1%	6.7%	5.6%
2023 Estimated High School Graduate	29.0%	25.1%	22.1%
2023 Estimated Some College	22.6%	24.3%	22.9%
2023 Estimated Associates Degree Only	12.5%	10.0%	9.3%
2023 Estimated Bachelors Degree Only	13.8%	17.9%	22.2%
2023 Estimated Graduate Degree	8.5%	9.0%	12.5%
Business			
2023 Estimated Total Businesses	676	5,980	15,808
2023 Estimated Total Employees	3,097	44,406	115,584
2023 Estimated Employee Population per Business	4.6	7.4	7.3
2023 Estimated Residential Population per Business	34.8	28.1	22.7

For more information, please contact:

ALEX MACLEAN 503.709.3563 | alex@cra-nw.com

ALEX MACLEAN IV 503.866.6425 | alex4@cra-nw.com



KNOWLEDGE

RELATIONSHIPS

EXPERIENCE



**COMMERCIAL
REALTY ADVISORS
NORTHWEST LLC**

Licensed brokers in Oregon & Washington

 15350 SW Sequoia Parkway, Suite 198 • Portland, Oregon 97224



www.cra-nw.com



503.274.0211

The information herein has been obtained from sources we deem reliable. We do not, however, guarantee its accuracy. All information should be verified prior to purchase/leasing. View the Real Estate Agency Pamphlet by visiting our website, www.cra-nw.com/home/agency-disclosure.html. CRA PRINTS WITH 30% POST-CONSUMER, RECYCLED-CONTENT MATERIAL.